



ROLE AND CHALLENGES OF EASTERN EUROPE REGION IN IPBES / ECOSYSTEM SERVICES IN MOLDOVA

**Ala Rotaru, Ministry of
Agriculture, Territorial
Development and Environment**

The geographical boundaries of Eastern Europe are not well defined. This is a vast region, which consists of a large number of countries from the Baltic Sea all the way to the Adriatic Sea.



The Platform's IPBES conceptual framework includes six interlinked elements constituting a social-ecological system that operates at various scales in time and space, for different countries:

- ❖ nature;
- ❖ nature's benefits to people;
- ❖ anthropogenic assets;
- ❖ institutions and governance systems and other indirect drivers of change;
- ❖ direct drivers of change; and
- ❖ good quality of life.

- IPBES aims to better inform decision-making process
- In the Eastern European region, transition of economy in recent decades has made a significant impact on the role of science in decision-making process.

Unlike other UN regions, which usually represent a **common platform** at the international level (including IPBES and CBD), Eastern European region have to work in the different way:

1. active participation in the establishment of global biodiversity platforms (Work programme of IPBES, Strategic plan of CBD; taking into account the interests of countries with economy in transition

2. transfer of global biodiversity platforms to national policies and processes



The Europe and Central Asia assessment will focus in particular on the following questions:

How can ecosystems that provide ecosystem services, such as those underpinning ecosystem-based adaptation to climate change and nature-based solutions to sustainable development, be protected through investments, regulations and management regimes for terrestrial, freshwater, coastal and marine systems?

What are the effects of production, consumption and economic development on biodiversity and ecosystem services and their contribution to human wellbeing? Major links with other regions will be assessed;

How can sectorial policies and new policy instruments make use of opportunities arising from the contribution of biodiversity and ecosystem services to human well-being?

EVENTS

- ❖ **IPBES Plenary meetings / last IPBES-7** in Columbia/March 2018
- ❖ **5 Pan-European Stakeholders Consultation meetings for IPBES – (PESC)**
-last in Bern/June 2018
- ❖ **BES-Net Triologue on Pollinators, Food Security and Rural Development-** in Sarajevo, Bosnia-Herzegovina/October 2017.

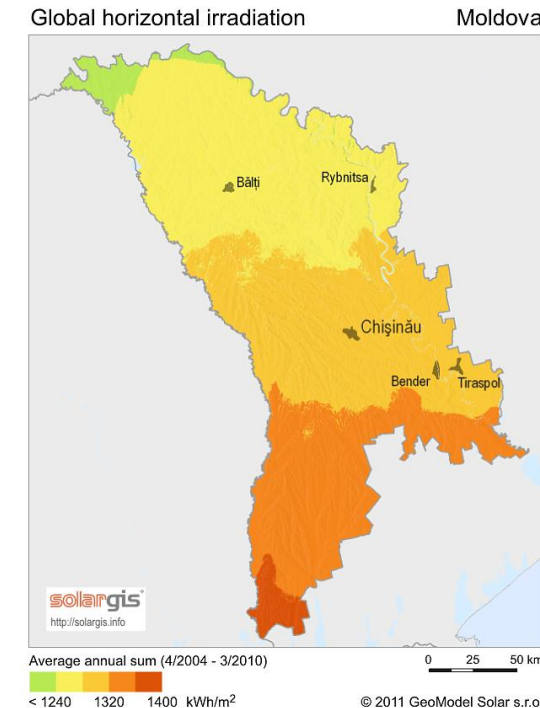


REPUBLIC OF MOLDOVA

Moldova is facing several threats to its environment.

New tools and techniques, proposed by IPBES can be transferred through capacity building to help national institutions identifying these issues and managing them to support national environmental policies in biodiversity conservation and ecosystems protection.

These can help identifying the role of biodiversity and ecosystems into political agenda.



BIODIVERSITY CONSERVATION IN MOLDOVA

- Barriers: country's drive for economic development, in particular the country's agriculture development and land degradation issues
- Build on the Emerald Network, and in the context of the Association Agreement with the EU, to the fulfillment of the Birds and Habitat Directives
- Mainstream biodiversity by offering a space for people and nature – different protection measures for different needs



ECOSYSTEM SERVICES IN MOLDOVA





Ecosystems services in Moldova

➤ *Agriculture*

In the Republic of Moldova, pastures and agricultural ecosystems provide supply services (with agricultural produce), estimated at 3,900 million US dollars. This value does not include adjustment services (water retention, soil erosion, etc.). The most important supplied products are animal and plant products. Biodiversity conservation means sustainable management of pastures and agricultural ecosystems by extending and diversifying eco-agricultural products. Sustainable ecosystem management in agriculture can add over 1,883.33 million US dollars to the national economy in the next 25 years.





Ecosystems services in Moldova

➤ **Forestry**

The services provided by the forestry ecosystems in the Republic of Moldova are estimated at about 28.3 million US dollars. In a sustainable ecosystem management scenario with significant decreases in illegal felling and an increase in the interest for non-ligneous forestry products, the present net value (25 years, 10% rate) is estimated at 578.8 million US dollars. Even though the supply services of the forestry ecosystems may decrease in the nearest future, it is estimated that these values shall pay back after 27 years.





➤ *Fishery*

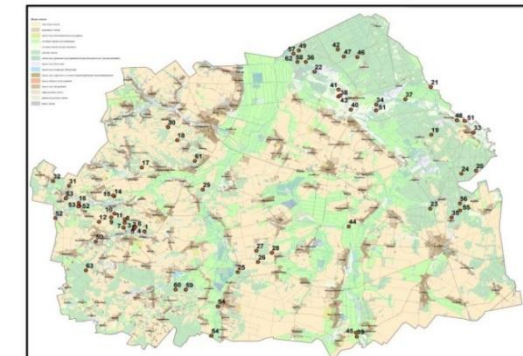
Aquatic ecosystems provide supply services, with fish as the main product. This sector is severely affected by the very high level of illegal fishing, the degradation of the aquatic fishery basins, by the closure of some specialised reproductive farms, as well as by growing fishery products and fish for consumption. Should illegal fishing decrease by means of implementing the effective legal provisions, the total contribution of the sector to the national economy may double, while the costs for sustainable aquatic biologic resources management would remain the same.



GOOD practices:

UNDP Project: MAINSTREAMING BIODIVERSITY CONSERVATION INTO MOLDOVA'S TERRITORIAL PLANNING POLICIES AND LAND USE PRACTICES

- **Objectives:**
- Modify the land use planning and enforcement system so that it addresses biodiversity loss;
- Demonstrate methods for conservation and sustainable use of biodiversity on communal lands in two target districts (Soroca and Stefan Voda).



Министерство природных ресурсов и охраны окружающей среды Республики Беларусь
Проект ПРООН/ГЭФ «Интеграция вопросов сохранения биоразнообразия в политику и практику территориального планирования в Беларуси»
Проект ПРООН/ГЭФ «Разработка интегрированных подходов к управлению водно-болотными угодьями с учетом принципа многоцелевого ландшафтного планирования с целью получения многосторонних экологических выгод»

Пойма реки Усяжи — место гнездования дупеля

Дупель с 2004 г. включен в Красную книгу Республики Беларусь (II категория охраны). Вид также включен в Красный список Международного союза охраны природы, Приложение I Директивы ЕС по охране редких птиц, Приложение II Бернской конвенции, Приложение II Боннской конвенции, Вынесен в Красные книги Литвы, Латвии, Польши.

В пределах места гнездования дупеля запрещается:

- в гнездовой период с 1 апреля по 1 июля осуществлять хозяйственную деятельность, приводящую к беспокойству птиц, гибели их гнезд и крадкам яиц; сенокосные, прополки и выкосы;
- проводить сельскохозяйственные мероприятия, организацию летних лагерей для них;
- применять средства защиты растений, применение всех видов удобрений;
- осуществлять добычу торфа и сарнолеп;
- проводить гидротехническую мелiorацию и иные работы по регулированию водного режима почв, кроме работ по восстановлению нарушенного режима;
- выжигать сухую растительность и ее остатки на корню, за исключением выполнения научно обоснованных работ;
- допускать перевалы: сельскохозяйственных животных и образование скотопрогонных троп;
- нарушать почвенный покров, за исключением подсева трав без перепахивки или другого механического нарушения дернины с периодичностью не чаще, чем один раз в 10 лет;
- создавать лесные культуры.

Место гнездования дупеля, видовой популяции, охраняемой законом

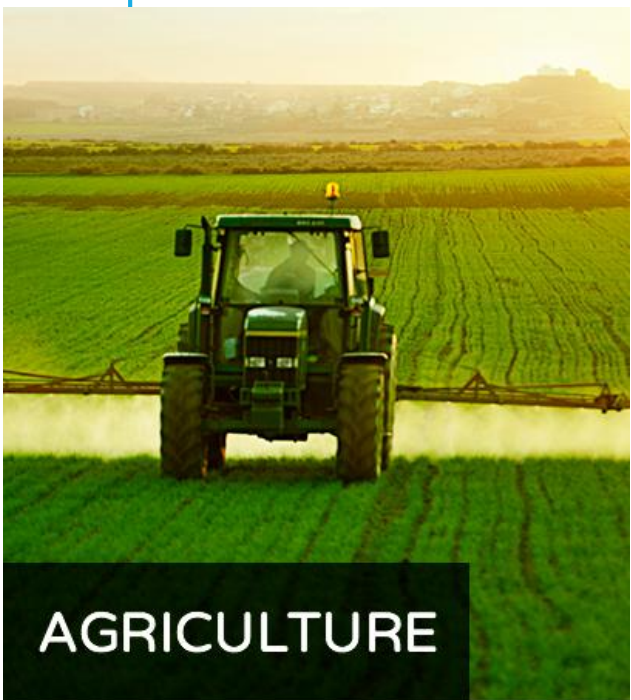
Внимание! За незаконное изъятие и уничтожение дупеля, нарушение мест его обитания предусмотрена административная и уголовная ответственность.

При выявлении нарушений установленного режима охраны места гнездования дупеля просьба обращаться по телефонам:
☎ 017-76-556-25 Служба охраны биоразнообразия
☎ 017-28-900-99 Государственный инспектор по охране окружающей среды
☎ 017-284-88-69 ГИОЦ Центр охраны окружающей среды

ВНИМАНИЕ!
Место обитания кумжи - вида, включенного в Красную книгу Республики Беларусь.
За незаконную добычу кумжи и уничтожение его места обитания предусмотрена уголовная и административная ответственность.

База данных паспортов и охраны обязательств
Необходима авторизация
E-mail:
Пароль:
Забыли пароль?

PROBLEMS



AGRICULTURE



Agriculture is one of the core sectors of the economy of the R. Moldova contributing to the gross domestic product by about *12%*, whereas to the *food industry* the contribution amounts to *40% of the total industry*.

Only about 2 per cent of the country's grassland ecosystem is still covered by natural or semi-natural habitats.

This low percentage is additionally fragmented; intensive agriculture has pushed the ecological integrity of steppe habitat to its limits.

The volume and the quality of the agricultural products depend directly on the pollinators' status.

The small forest area - 11% and protected natural areas - 5.6%, which is a shelter for several species of pollinators.



Planned activities



1. Identification ecosystems which provide significant services
For increasing the welfare of population and the environment.
 2. Establishment the Emerald Network as part of the Pan-European Ecological Network;
 3. Development the conservation plans for species included in the Red Book of the Republic of Moldova, EU Directives and International conventions;
 4. Development *policy documents*, on promoting the extension of the protection strips by planting melliferous species, with lands with perennial and annual plants, which would include a green infrastructure in accordance with the agricultural ecosystems.
- 3) Development conservation programs for the pollinating species' habitats.





THANK YOU !

**For more information, feedback
and follow-up, contact:**

Ala Rotaru

Rotaru.ala61@gmail.com